

Certificate of Analysis

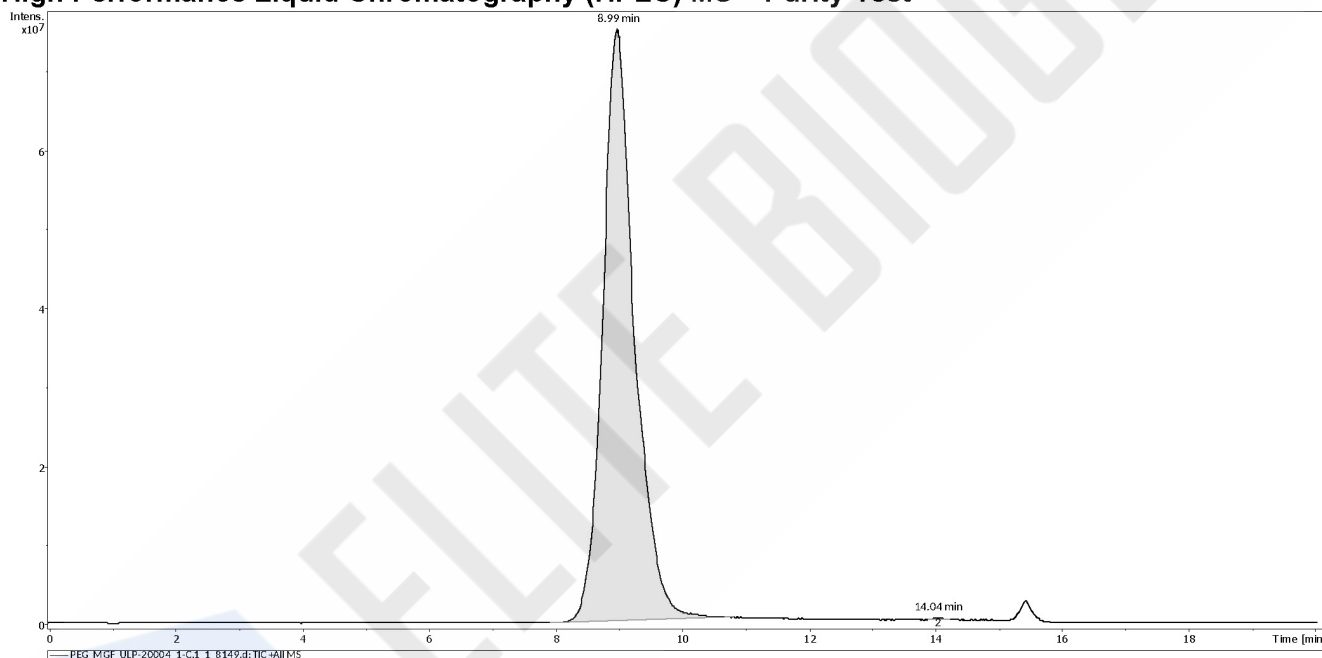
PEG-MGF 1 mg

pegylated Insulin-like growth factor fragment (IGF-1Ec)

Compound : PEG-MGF
Lot number : 833
Analysis date : 2025-01-09
Purity % : 99.90%
Method : HPLC-MS

Client : Elitebiogenix Inc
9140 Court Dr
Cantonment, FL 32533

High Performance Liquid Chromatography (HPLC) MS – Purity Test



PEAK LIST

	Time (min)
1	8.99
2	14.04

Number of detected peaks: 2

	Area	%Area
1	2.61E+09	99.90
2	2.54E+06	0.10

PEG-MGF

Analysis Performed by
Ken Pendarvis, ChE
Analytical Chemist
MZ Biolabs
contact@mzbiolabs.com



Note: Injectable peptides may contain salts and sugars to aid in solubility and act as pH buffers. These are not normally detected using UV and are not considered impurities.

2025-01-28

PEG-MGF 1 mg

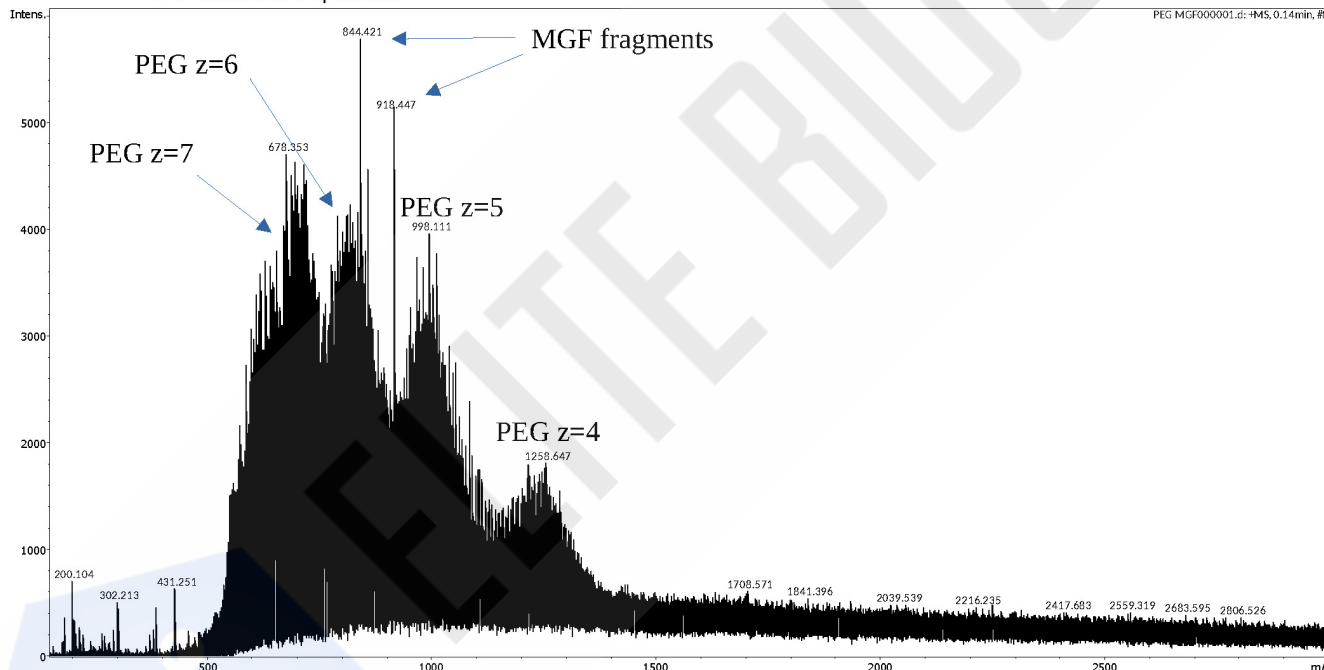
pegylated Insulin-like growth factor fragment (IGF-1Ec)

Mass Spectrometry (MS) – Identity Test

Molecules with PEG added are difficult to interpret. The spectrum below shows 4 large overlapping humps corresponding to different charge states of PEG when ionized (+4, +5, +6, +7). These humps are characteristic of PEG and indicate the MGF is pegylated. This is further confirmed by the m/z spacing corresponding to the 44 Da repeating peg units. This is not shown below because space constraints. MGF is confirmed by the peaks of m/z 844 and 918 which are unique to MGF and appear when the mass spectrometer provides a slight fragmentation energy to the sample.

Identity Confirmed

Recorded MS spectrum



Analysis Performed by
Ken Pendarvis, ChE
Analytical Chemist
MZ Biolabs
contact@mzbiolabs.com



1899-12-30